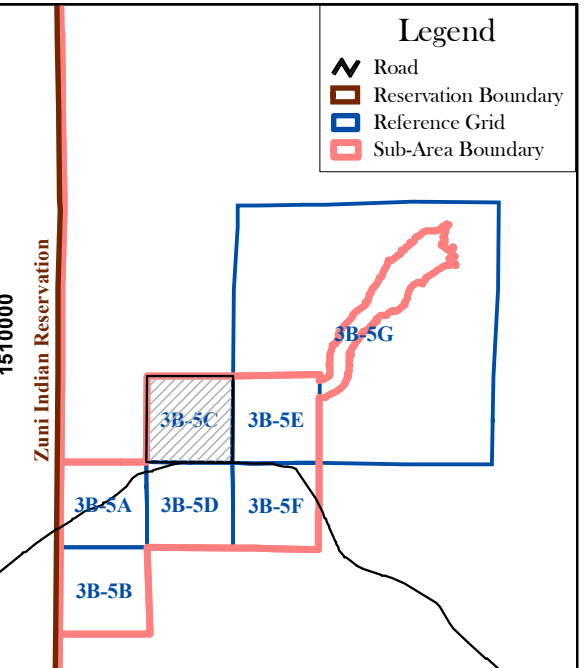
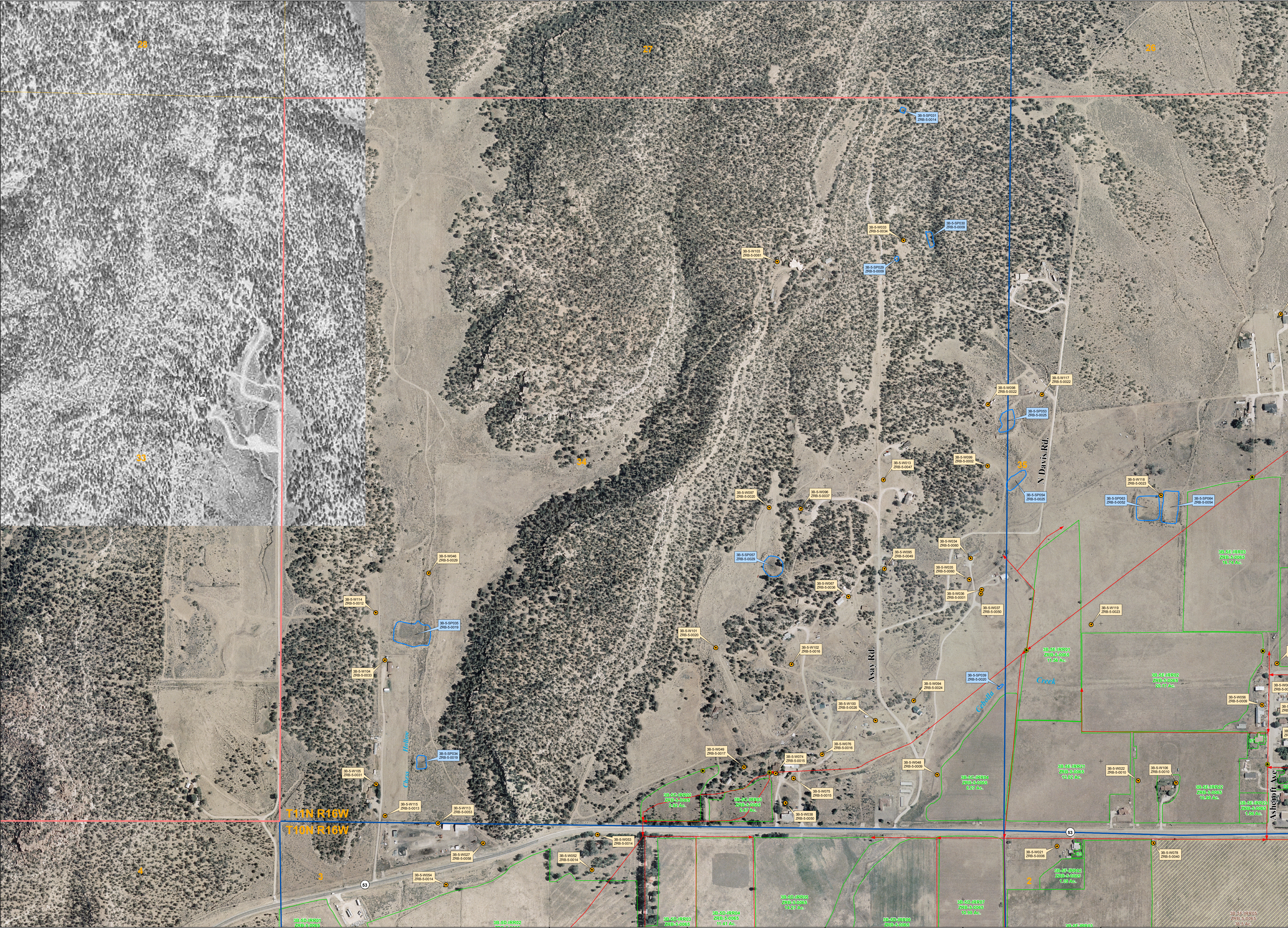


2510000 2517000 2518000 2519000 2520000 2521000 2522000 2523000 2524000

1504000 1505000 1506000 1507000 1508000 1509000



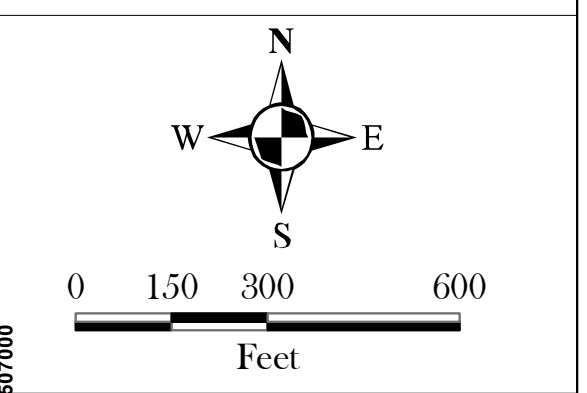
INDEX

LEGEND

- WELL
- DIVERSION
- IRRIGATION PIPELINE
- STOCKPOND (MAN-MADE)
- IRRIGATED FIELD
- FALLOW FIELD
- RESERVATION BOUNDARY
- SUB-AREA BOUNDARY
- TOWNSHIP/RANGE LINE
- SECTION LINE
- MAP INDEX LINE

Small Tract Key

Tract No.	Parcel ID	Sub-File No.	Area
1	3B-5-0001	ZRB-5-0001	1.79 Ac.
2	3B-5-0002	ZRB-5-0002	0.72 Ac.
3	3B-5-0003	ZRB-5-0003	0.23 Ac.
4	3B-5-0004	ZRB-5-0004	0.84 Ac.
5	3B-5-0005	ZRB-5-0005	0.84 Ac.
6	3B-5-0006	ZRB-5-0006	0.27 Ac.
7	3B-5-0007	ZRB-5-0007	0.14 Ac.
8	3B-5-0008	ZRB-5-0008	0.28 Ac.
9	3B-5-0009	ZRB-5-0009	0.28 Ac.
10	3B-5-0010	ZRB-5-0010	0.28 Ac.
11	3B-5-0011	ZRB-5-0011	0.28 Ac.
12	3B-5-0012	ZRB-5-0012	0.28 Ac.
13	3B-5-0013	ZRB-5-0013	0.28 Ac.
14	3B-5-0014	ZRB-5-0014	0.28 Ac.
15	3B-5-0015	ZRB-5-0015	0.28 Ac.
16	3B-5-0016	ZRB-5-0016	0.28 Ac.
17	3B-5-0017	ZRB-5-0017	0.28 Ac.
18	3B-5-0018	ZRB-5-0018	0.28 Ac.
19	3B-5-0019	ZRB-5-0019	0.28 Ac.
20	3B-5-0020	ZRB-5-0020	0.28 Ac.
21	3B-5-0021	ZRB-5-0021	0.28 Ac.
22	3B-5-0022	ZRB-5-0022	0.28 Ac.
23	3B-5-0023	ZRB-5-0023	0.28 Ac.
24	3B-5-0024	ZRB-5-0024	0.28 Ac.
25	3B-5-0025	ZRB-5-0025	0.28 Ac.
26	3B-5-0026	ZRB-5-0026	0.28 Ac.
27	3B-5-0027	ZRB-5-0027	0.28 Ac.
28	3B-5-0028	ZRB-5-0028	0.28 Ac.
29	3B-5-0029	ZRB-5-0029	0.28 Ac.
30	3B-5-0030	ZRB-5-0030	0.28 Ac.
31	3B-5-0031	ZRB-5-0031	0.28 Ac.
32	3B-5-0032	ZRB-5-0032	0.28 Ac.
33	3B-5-0033	ZRB-5-0033	0.28 Ac.
34	3B-5-0034	ZRB-5-0034	0.28 Ac.
35	3B-5-0035	ZRB-5-0035	0.28 Ac.
36	3B-5-0036	ZRB-5-0036	0.28 Ac.
37	3B-5-0037	ZRB-5-0037	0.28 Ac.
38	3B-5-0038	ZRB-5-0038	0.28 Ac.
39	3B-5-0039	ZRB-5-0039	0.28 Ac.
40	3B-5-0040	ZRB-5-0040	0.28 Ac.
41	3B-5-0041	ZRB-5-0041	0.28 Ac.
42	3B-5-0042	ZRB-5-0042	0.28 Ac.
43	3B-5-0043	ZRB-5-0043	0.28 Ac.
44	3B-5-0044	ZRB-5-0044	0.28 Ac.
45	3B-5-0045	ZRB-5-0045	0.28 Ac.
46	3B-5-0046	ZRB-5-0046	0.28 Ac.
47	3B-5-0047	ZRB-5-0047	0.28 Ac.
48	3B-5-0048	ZRB-5-0048	0.28 Ac.
49	3B-5-0049	ZRB-5-0049	0.28 Ac.
50	3B-5-0050	ZRB-5-0050	0.28 Ac.



January 2007

Labels that are truncated appear on an adjacent map.

Map is displayed in New Mexico State Plane Coordinate System, West Zone, NAD 1983.

Background Sources:
Aerial photography exposed on July 17, 2004 by New Mexico Aerial Surveys, Inc. of Albuquerque, New Mexico.
Section, Township, and Range lines received from University of New Mexico GIS web site.

Zuni River Basin Hydrographic Survey
Sub-Area Ramah
Map 3B-5C 1"= 300'

Natural Resources Consulting Engineers, Inc.
Fort Collins, CO Oakland, CA Asmara, ERITREA

Project Manager:
L. Niel Allen, P.E., Ph.D.